

**AUTOMATED RESIDUAL
STRESS ANALYSIS**

LXRD

*Laboratory Non-Destructive
Residual Stress Measurement System*



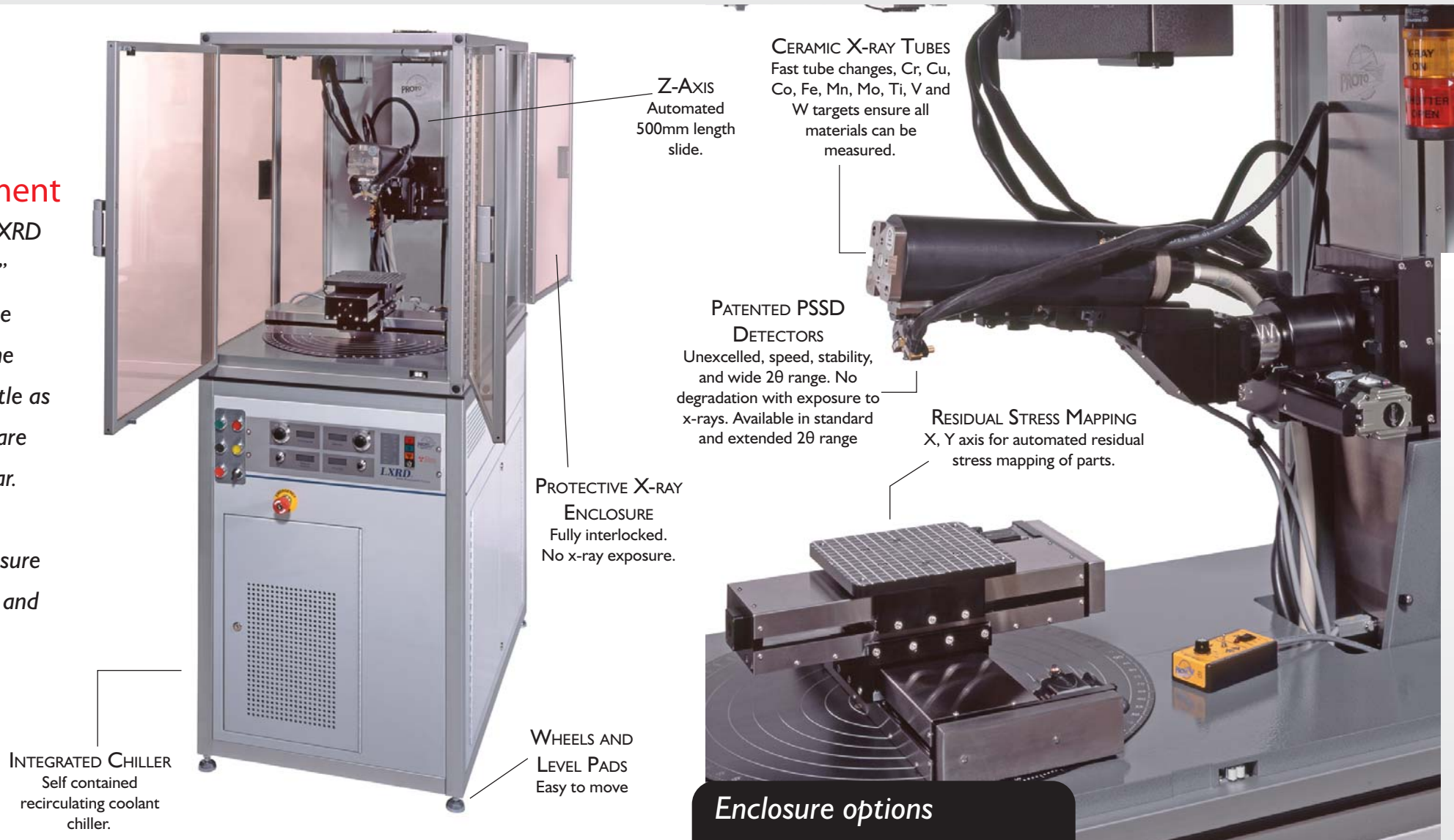
A world of solutions

LXRD

Laboratory High Speed Measurement

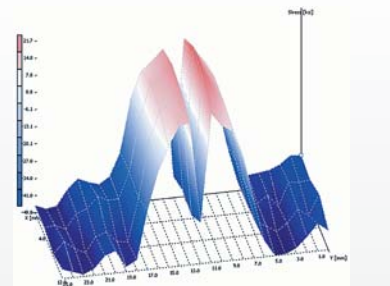
A laboratory and factory floor star performer the LXRD has been designed for heavy duty “round the clock” operation. Extremely fast, accurate and reliable the LXRD offers the highest return on investment in the industry. Measurements can be performed in as little as a few seconds. Easy access maintenance features are designed to keep you up and running year after year.

LXRD is available with standard or widebody enclosure for large part capacity, flexible goniometer options and optional laboratory residual stress mapping.



RESIDUAL STRESS MAPPING WITH XRDWIN 2.0 SOFTWARE

An exclusive feature of Proto systems, automated stress mapping can be the key to solving many residual stress problems.



STRESS MAP OF WELD.

Goniometer Options

MG2000L



Our standard laboratory goniometer. With a 40 mm focal distance and a 60 mm high power x-ray tube, the MG2000L offers incredible speed and accuracy.

MG30L



The MG30L is our smallest laboratory goniometer available. With a 30 mm focal distance and a 16 mm x-ray tube the MG30L is an ideal choice for tight locations.

MG40L



The MG40L with a 40 mm focal distance and a 30 mm x-ray tube, offers a great balance between speed and part accessibility.

MGBH40L



Bolthole head. The MGBH40L is designed to measure on the inner diameter of small holes.

Enclosure options

BASIC



A radiation proof enclosure with an automated 800 mm length Z-axis. Can accept future upgrades such as a Phi table or laboratory mapping stages.

LABORATORY MAPPING



Automated X, Y & Φ axis for full featured laboratory mapping. Can be added to either the standard or the widebody enclosure.

WIDEBODY



Optional widebody enclosure for increased part size capacity. Standard Dimensions (L x W x H): 1046 x 665 x 1886 mm Widebody Dimensions: 1096 x 865 x 1886 mm

LXRD-GR GANTRY ROBOT



The LXRD-GR features the largest enclosure capacity of any residual stress system in the world and is designed for easy large part access from three sides. This unit includes an integrated Φ axis and gantry robot X, Y and Z axis.